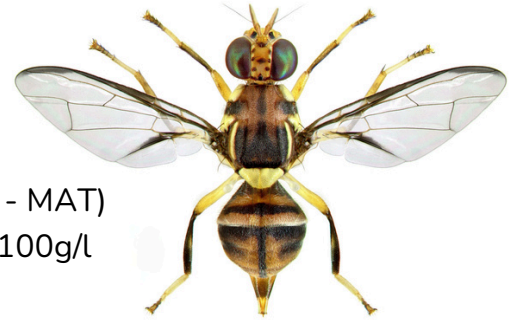


## Technical Data Sheet

# BACTRO-ENEMY™

Oriental fruit fly parapheromone lure



- Mode of Action:** Attract & Kill (Male Annihilation Technology - MAT)  
**Active Components:** 99% Methyl Eugenol A 931 + Deltamethrin 100g/l  
**Dispenser Details:** Wooden block  
**Active Life:** 8 weeks  
**Shelf Life:** 2 years under recommended storage

### Pest Overview

*Bactrocera dorsalis*, the Oriental fruit fly, is a globally invasive tephritid pest attacking over 80 fruit and vegetable hosts. Adults (6–8 mm) feature a yellow-brown body with a distinctive black “T” on the thorax and narrow costal wing bands. Females deposit clusters of eggs under fruit skin; larvae tunnel through the pulp for 8–12 days, causing internal rot, fruit drop, and up to 80 % crop loss.

**Main Hosts:** Mango, Citrus, Avocado, Guava, Passion fruit, Papaya, Plums, Peach, Tomato.

### Mechanism

**Bactro-Enemy™** employs an Attract-and-Kill approach by infusing a weather-resistant wooden block with Methyl Eugenol and deltamethrin. The block emits a concentrated pheromone plume that lures male *B. dorsalis* from afar. Upon alighting, flies contact the deltamethrin-coated surface and receive a lethal dose within hours. Targeting only males, this species-specific Male Annihilation Technology collapses the breeding population while minimizing non-target impacts.

### Recommended Trap



Lynfield/Container trap.

### Trap Density

- 4 - 5 traps per hectare for monitoring.  
10-16 traps per hectare for mass trapping.

### Trap Maintenance

- Inspect the traps on a regular basis.
- Replace the wooden block every 8 weeks to achieve optimum results.



**Bioenemy Africa Limited**

+254 100 904587 | sales@bioenemyafrica.co.ke | www.bioenemyafrica.com

