

Sex Pheromone Lure

False Codling Moth
(Thaumatotibia leucotreta)



Every moth you trap is a step closer to a bountiful, protected harvest.

FCM Host crops

Roses



Avocado



Citrus



Guava



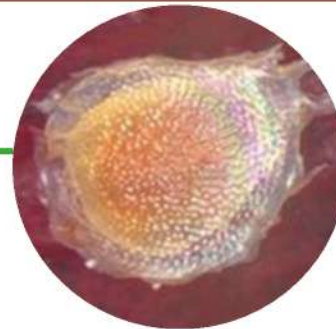
Macadamia



Apples



Throughout its life cycle, False Codling Moth (FCM) inflicts escalating damage on fruit crops, beginning when females deposit 100–250 flattened, translucent eggs singly on ripening hosts, which hatch in as little as two days under warm conditions.



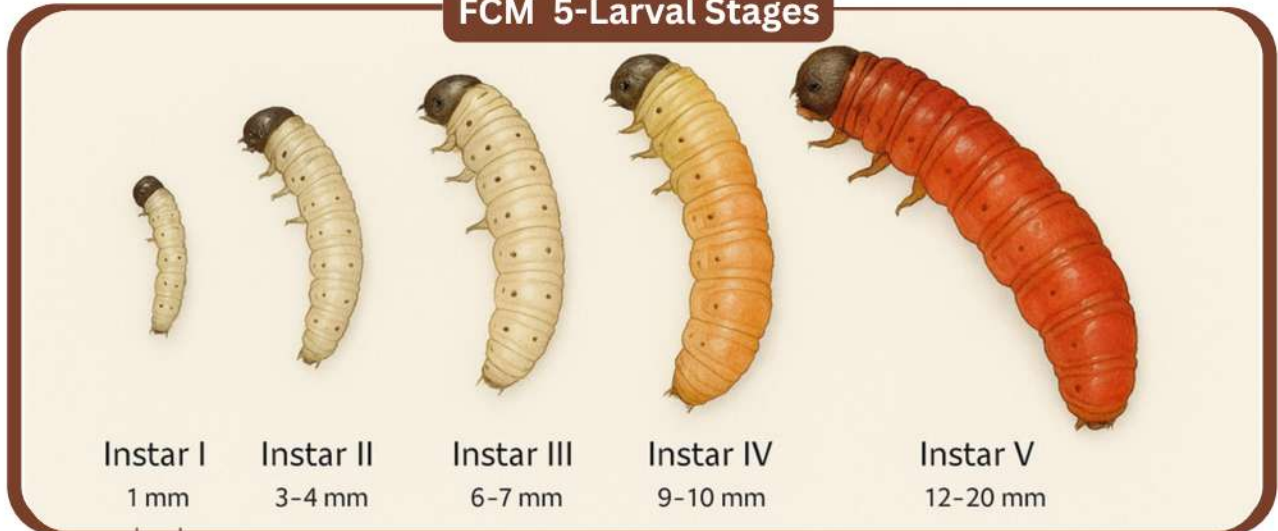
- Female moth lays egg on the outside of the rosebud.
- The eggs are flattened ovals, translucent white in color, and measure about 0.9 mm in diameter.

Larval Entry & Feeding Damage

- Upon emergence, first-instar larvae bore through the fruit rind, creating tiny entry holes that are often difficult to spot externally.
- As they tunnel through the flesh across all five instars, dark, granular frass accumulates in these holes, betraying the hidden feeding damage.
- Feeding larvae disrupt juice sacs and seed cavities, leading to sunken lesions surrounded by yellow halos on green fruit or orange-brown spots on ripe produce.
- The compromised rind allows fungi and bacteria to invade, accelerating decay and sometimes producing visible mold.

- The False Codling Moth undergoes five distinct larval instars, each differing in size, coloration, and morphology as they feed within host fruit before exiting to pupate.
- Early instars are tiny, creamy white caterpillars with dark head capsules that progressively darken and enlarge, culminating in fifth-instar larvae that are 12–20 mm long and exhibit pink to orange hues.

FCM 5-Larval Stages



Damage



FCM Larval damage on Avocado



- Once fully grown, larvae chew neat exit holes of about 1 mm in diameter and drop to the ground to pupate in silken cocoons under tree barks or in the soil.
- This stage itself does not harm the fruit, but ensures the pest's persistence in the orchard environment.

Pupae



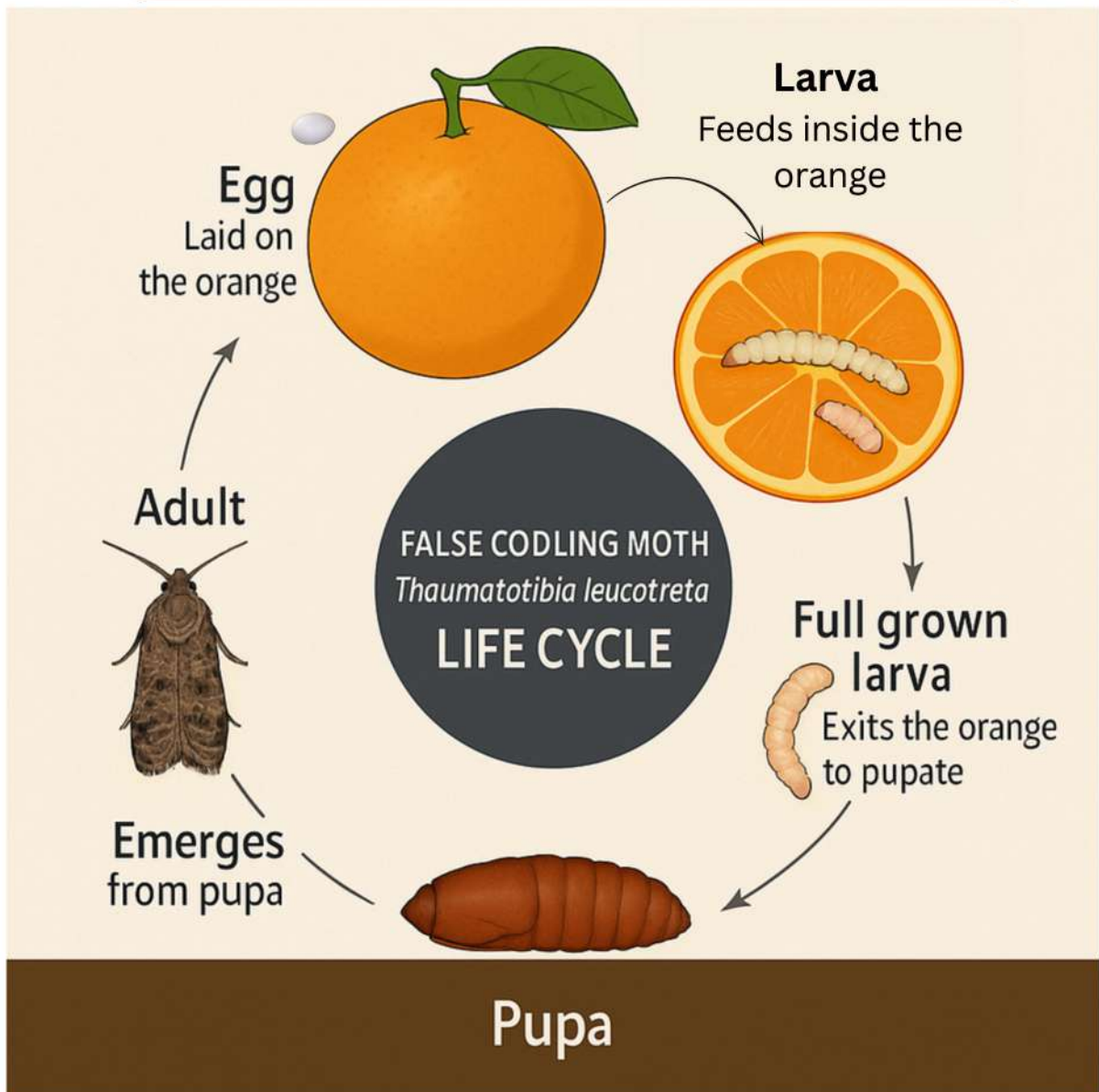


- Once fully developed, adult moths come out of the cocoons, completing the life cycle.
- Male moths span approximately 15–16 mm across their wings, while females measure about 19–20 mm.

Adult



The Life Cycle of False Codling Moth





- Protect your crops with the precision of nature, deploy our species-specific FCM Sex Pheromone Lures today to attract and trap male moths before they can mate.
- Early detection means fewer sprays, healthier fruits.
- Our new False Codling Moth Sex Pheromone Lure is formulated to attract the male into monitoring traps for early detection and population management.
- Our lure combines the key pheromone components (Z)-8-dodecenyl acetate, (E)-8-dodecenyl acetate, and (E)-7-dodecenyl acetate, delivering consistent release for up to 8 weeks and enabling precise integrated pest management strategies.
- The product offers species-specificity, zero toxic residues, compatibility with organic systems, ease of use, and cost-effectiveness.

Advantages

Species-Specific:

Targets only male False Codling Moth, with negligible impact on non-target organisms.

Early Detection:

Enables timely interventions by indicating first moth flights and population peaks, reducing reliance on calendar sprays .

Integrated Pest Management (IPM):

Seamless integration with cultural controls and biological agents.

Residue-Free:

No chemical residue on fruit or foliage, meeting the requirements of organic and export markets.

Cost-Effective:

Long-lasting lures and low trap densities lower labor and material costs compared to calendar insecticide applications.

Reduced Chemical Inputs:

Rely on targeted biological and cultural controls rather than broad-spectrum pesticides.

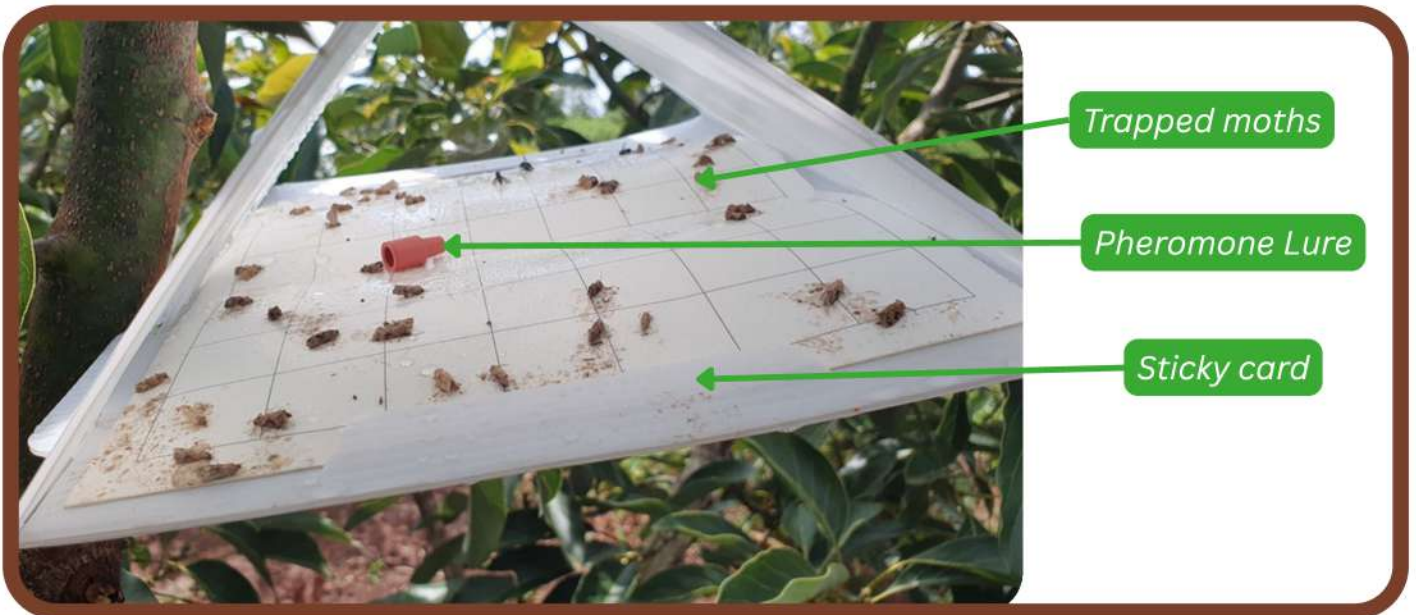
Mode of Action

Sex Attraction

Synthetic pheromone components mimic the natural female FCM sex pheromone blend, eliciting upwind flight by males toward the lure, resulting in their capture in sticky delta traps.




Delta Trap





- Hang the trap at least 1.5 to 2 meters high to allow for maximum airflow to distribute the semiochemical molecules across the orchard.
- Ensure trap entrances remain free from obstructing branches and leaves.



Bioenemy Africa Limited

 +254 100 904587

 sales@bioenemyafrica.co.ke

 www.bioenemyafrica.com