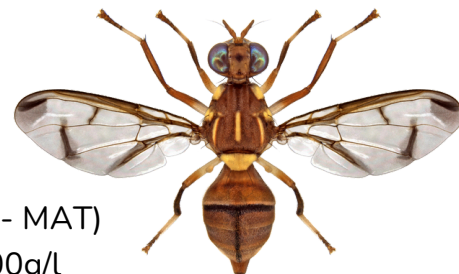


Technical Data Sheet

MELONFLY-ENEMY™

Melon fly parapheromone lure



- Mode of Action:** Attract & Kill (Male Annihilation Technology - MAT)
Active Components: Enriched Ginger Oil (EGO) + Deltamethrin 100g/l
Dispenser Details: Wooden block
Active Life: 8 weeks
Shelf Life: 2 years under recommended storage

Pest Overview

Zeugodacus cucurbitae, the melon fly, is a major pest of cucurbit crops. Adults (6–8 mm) are yellowish-brown with clear wings and banded abdomens. Females lay eggs under fruit skin; larvae feed inside the pulp for 5–10 days, causing internal rot, fruit drop, and crop losses of up to 80%.

Main Hosts: Watermelon, Pumpkin, Butternut, Cucumber, Courgette

Mechanism

Melonfly-Enemy™ is a ready-to-use, slow-release wooden block lure designed for the monitoring and mass trapping of male *Zeugodacus cucurbitae* (melon fly). It contains Enriched Ginger Oil (EGO), a natural zingerone-rich male attractant, combined with Deltamethrin 100 g/L, a fast-acting contact insecticide.

Recommended Trap



Lynfield/Container trap.

Trap Density

- 4 - 5 traps per hectare for monitoring.
10-16 traps per hectare for mass trapping.

Trap Maintenance

- Inspect the traps on a regular basis.
- Replace the wooden block every 8 weeks to achieve optimum results.



Bioenemy Africa Limited

+254 100 904587 | sales@bioenemyafrica.co.ke | www.bioenemyafrica.com

